

Update

Mental Health and Addiction

Derek Thompson
Manager Mental Health,
Service Commissioning

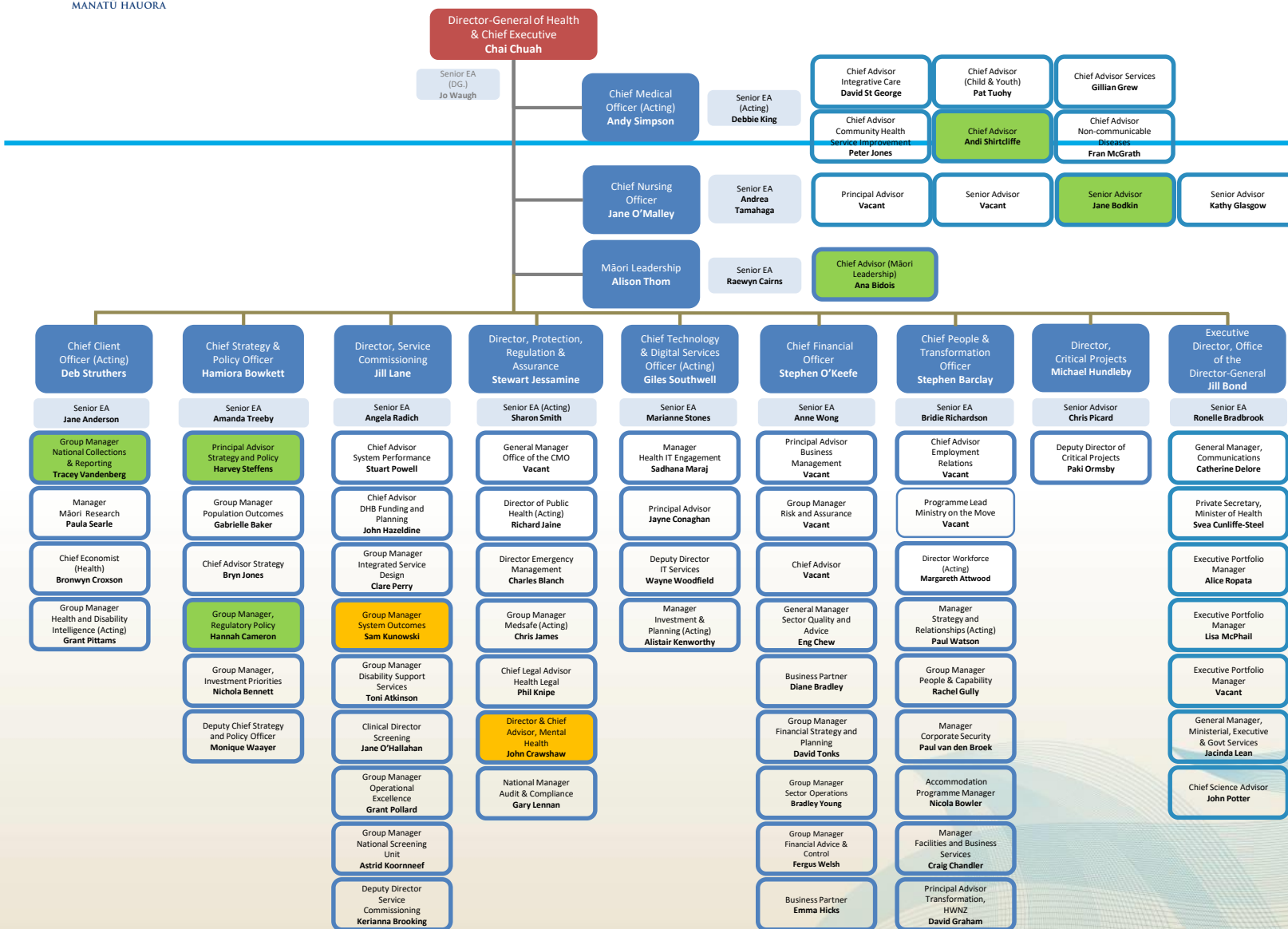
11 March 2017

New Zealand Health Strategy

Health links with the wider environment



Organisation structure as at 24 November 2016



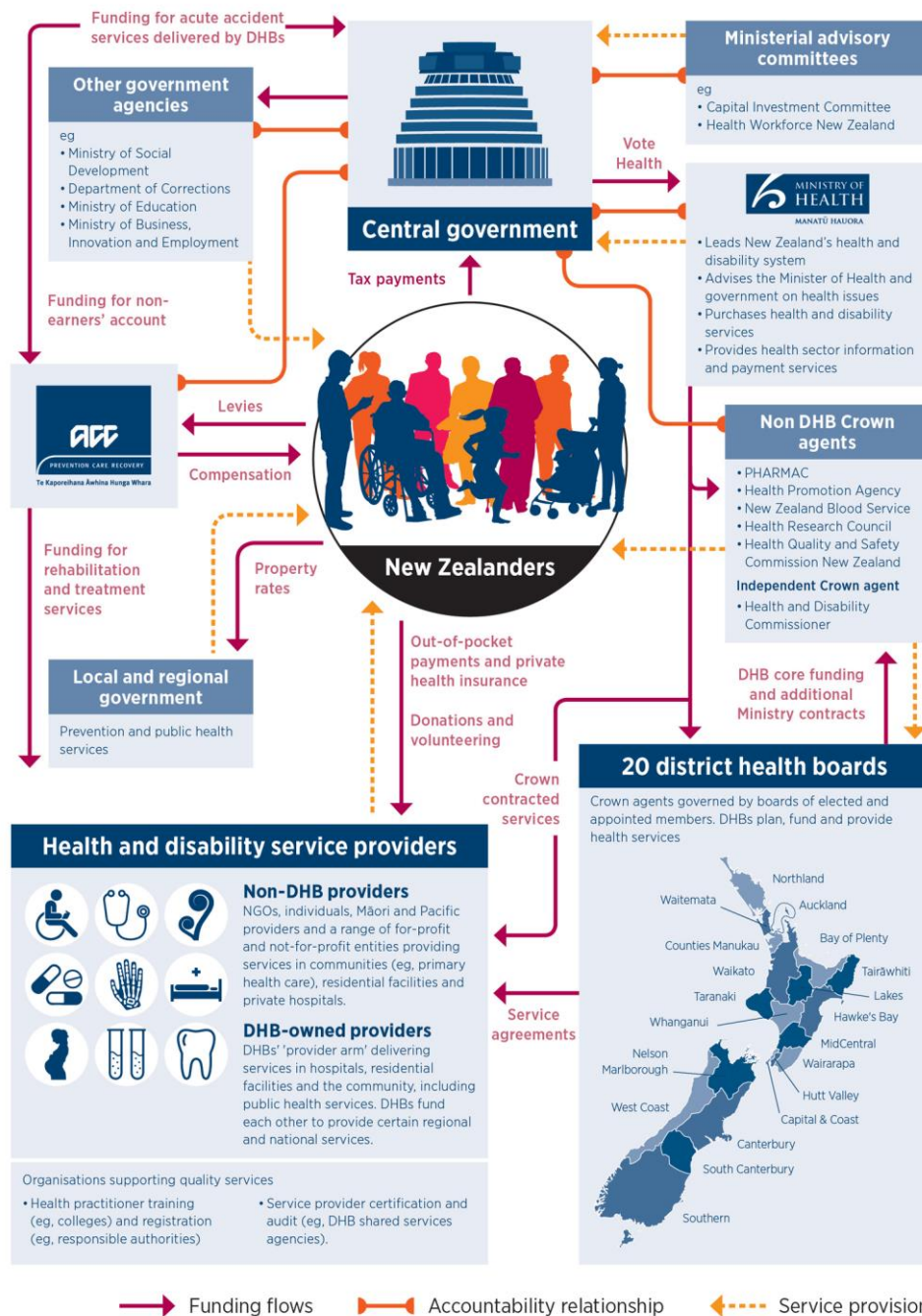
System Outcomes Group – Sam Kunowski

- Manager Mental Health – Derek Thompson
 - Manager Addictions and Gambling Harm Minimisation – Richard Taylor
 - Manager Healthy Families NZ – Michelle Palmer
 - Manager Chronic Disease Prevention – Manaia King
 - Manager Communicable Disease and Healthy Environments – Ana Redican
 - Manager Immunisation – Rayoni Keith
 - Manager Tobacco Control – Jane Chambers
 - Manager DHB Relations – Peter Jane
 - Manager Capital and Operating – Mhairi McHugh
 - Manager Monitoring – David AtKin
-


VOTE HEALTH

Approximately
NZ\$16Billion per annum
total Vote

Mental Health &
Addiction spend approx.
NZ\$1.4 Billion



New Zealand Health Strategy



**All New Zealanders live well,
stay well, get well**, in a system
that is **people-powered**, provides
services **closer to home**, is
designed for **value and high
performance**, and works as
one team in a **smart system**.

Government priorities

Delivering better public services
Responsibly managing the Government's finances
Rebuilding Christchurch
Building a more competitive and productive economy

Cross-government work 2016, eg,

Social Sector Trials
Whānau Ora
Children's Action Plan
Action Plan on Household Crowding to Reduce Rheumatic Fever
Prime Minister's Youth Mental Health Project
New Zealand Disability Strategy



New Zealand Health Strategy

Population and other health strategies, eg,

He Korowai Oranga – Māori Health Strategy
'Ala Mo'ui – Pathways to Pacific Health and Wellbeing
Health of Older People Strategy
Primary Health Care Strategy
Rising to the Challenge: Mental Health and Addiction Service
Development Plan
Living Well with Diabetes: A Plan for People at High Risk
or Living with Diabetes

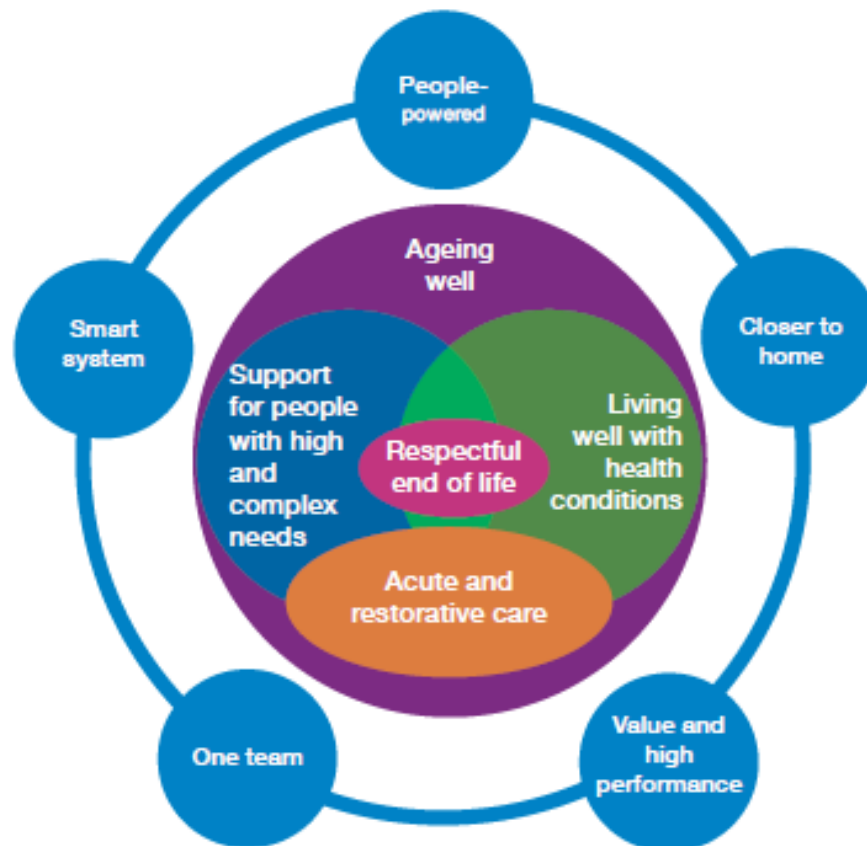
Commissioning Framework for Mental Health and Addiction: A New Zealand guide



Note: KPIs = key performance indicators

Healthy Aging Strategy

Older people live well, age well and have a respectful end of life in age friendly communities.



Mental Health & Addiction Workforce Action Plan 2017 – 2021

“the right number of people with the right skills, in the right place, at the right time, with the right attitude, doing the right work, at the right cost with the right work output.”

The overall outcome of the Action Plan is that **New Zealanders experience joined-up care from an integrated, competent, capable, high-quality and motivated workforce focused on improving health and wellbeing.**

Mental Health and Addiction Workforce Action Plan 2017–2021

Four priority areas

1	A workforce that is focused on people and improved outcomes	2	A workforce that is integrated and connected across the continuum	3	A workforce that is competent and capable	4	A workforce that is the right size and skill mix
---	---	---	---	---	---	---	--

Fourteen actions

2017 Context cont...

- Developing a Mental Health and Addiction Population Outcomes Framework (He Tangata)
 - Rural Mental Health and Addiction Framework (RHAANZ)
 - Youth Mental Health Programmes – Evaluation report published December 2016
 - National Youth Forensic Unit – opened April 2016
-

2017 Context cont....

- Revised Gambling Harm Minimisation Strategy 2016/17 to 2018/19
 - National Drug Policy 2015 to 2020
 - Substance Abuse Compulsory Assessment and Treatment Act 2017
 - Mental Health Act review
-

2017 Context cont....

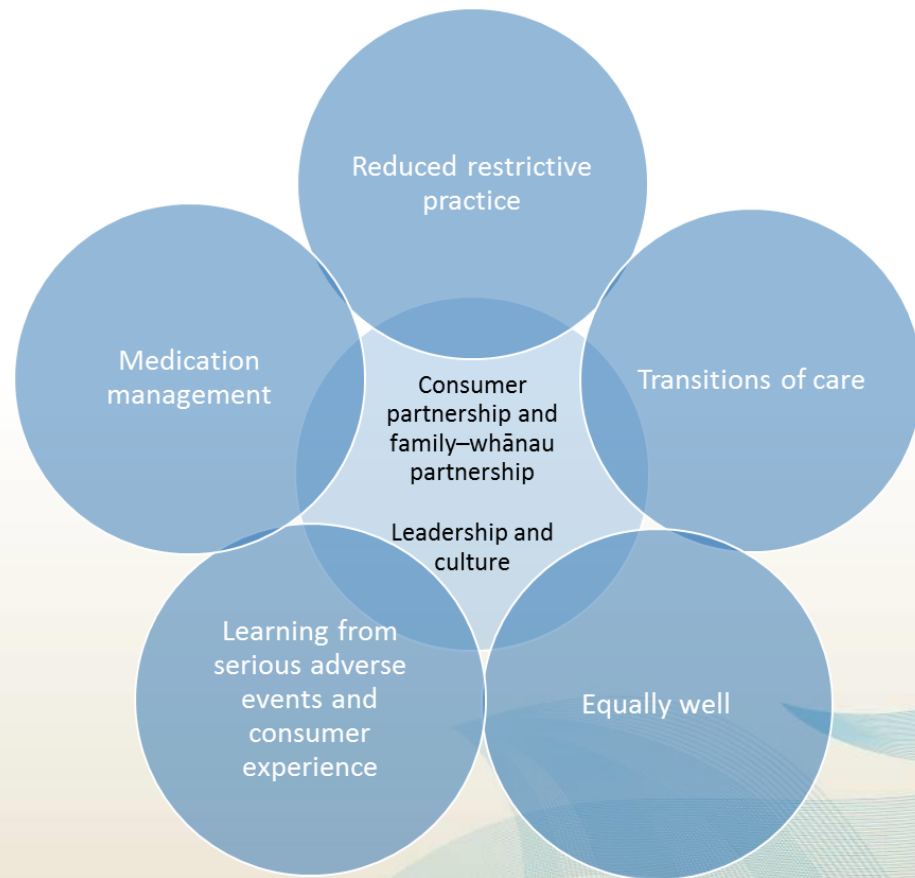
- Pharmacy Action Plan 2016-2020 published June 2016 – opportunities for the role of Pharmacists.
 - Choice and Medication
 - Primary and Community mental health - National telehealth services e.g. 111 triage service; expert advice line in development.
 - Supporting Parents Healthy Children Guidelines published 29 September 2015
-

2017 Context cont....

- Fit for the Future
 - New Suicide Prevention Strategy in development
 - New Mental Health and Addiction Strategy in development
 - Social investment approach at a whole of government level. Working across sectors to improve outcomes and inform investment decisions.
 - Social Investment Unit mental health test case
-

Quality Improvement Plan

- Sector led working with HQSC and Te Pou
- Five key focus areas



He aha te mea nui o te ao ?

He Tangata, He Tangata, He Tangata

THANK YOU

